

Trouble shooting

MALFUNCTION	CAUSE	SOLUTION
Stimulation is weak or not existent	Are the wires connected to the electrode heads and the main device properly?	Connect all the parts.
	Are the batteries dead?	Replace the batteries.
Skin turns red	Is the treatment time too long?	Stop treatment or treat another area.
Skin feels numb	Are electrode heads dirty?	Clean with damp cloth or replace them.
	Do the electrode heads touch the skin closely?	Remove and place back on the skin closely?
Device could not be turned on	Batteries installed correctly?	Remove and install batteries.
	Are batteries dead?	Replace the batteries.

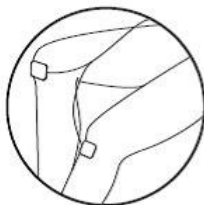
Positions



Waist



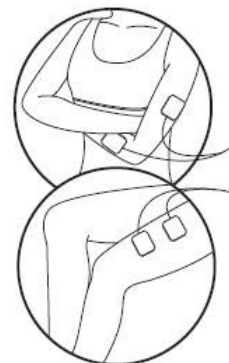
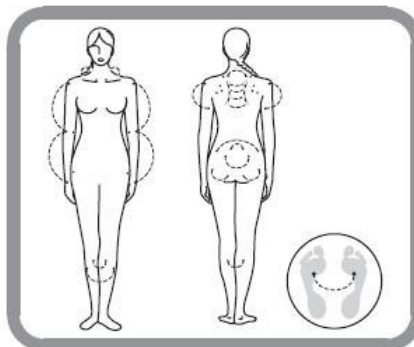
Shoulder



Joints



Sole of Foot



Hand or Foot



visit www.ZEUSELECTROSEX.COM

PALM POWERBOX

Electro Stimulation System



Zeus Palm Powerbox Features:

- Easy to Use, Digital LCD Screen
- 4 Reusable Electrode Pads
- 8 Modes
- 10 Speeds
- Palm powerbox



INSTRUCTIONS

Introduction

Zeus Electrosex Palm Powerbox Electro Stimulation Massage System is a portable device that delivers electric impulses to tired and sore muscles. These impulses are generated by the device and delivered through electrodes to the skin of the target muscles. The impulses mimic the action potential coming from the central nervous system to trigger contraction of the muscle. It may help relieve minor aches and pains in various parts of the body such as the waist, shoulders, joints, hands and feet. The AC126 Zeus Palm Powerbox is especially helpful in relieving stiff muscle, sore muscle from over exercising, and others.

Features of AC126 Zeus Palm Powerbox Electro Stimulation Massage System:

1. LCD Screen
2. Adjustable speed and intensity
3. Three volts provided by two AAA batteries
4. Main unit measure: 3.94"x2.94"x1.02"
5. Net weight of the main unit: 0.14lb
6. Accessories included: four pieces of electrode pads and one wire.

Safety Warnings

DANGER

1. Do not use this unit if you are using an implanted electronic medical device such as a pacemaker or other life maintaining device.
2. Do not use this unit if you are wearing electronic medical devices for monitoring health functions.

WARNING

If you have one of the following conditions, please consult with your physician before purchasing or using this device. If you have any doubt as to your health status, please consult your physician prior to use.

Acute disease; malignant tumor; infective disease; pregnant; heart disease; high fever; abnormal blood pressure; lack of skin sensation or an abnormal skin condition; any condition requiring the active supervision of a physician

NOTICE

- Do not use this device while driving.
- Do not use this device while sleeping.
- Do not use this device in high humidity areas such as bathroom.
- Keep this device out of reach of children.
- Stop using this device immediately if you feel pain, discomfort, dizziness or nausea.
- Do not attempt to move the electrode heads while the device is operating.
- Do not use the device around the heart, on the head, mouth, pudendum or blemished skin areas.

Set Up

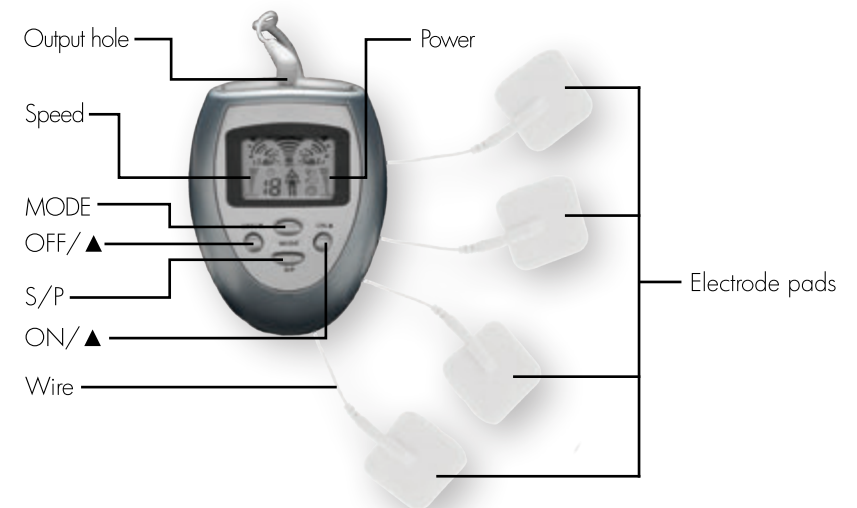
Unpack the box of the product, take the product and batteries out, place the batteries into the back compartment of the device, and connect the electrode pads with the lead wire.



Operating the product

To begin

1. Install 2 AAA batteries into the device.
2. Connect the electrode wire in the output hole at the top of the pulse massager.
3. Attach the electrode pads to the treatment area, such as shoulder.
4. Press the button ON/▲ to turn on the device.
5. After the device is on, press start at intensity level 1 by pressing the ON/▲ button. To change the level of speed and power up continue to press the ON/▲ button. Use the OFF/▲ and ON/▲ to lower the level of power and speed. Press the SP button to switch between power and speed. Ten levels of speed and power are available.
6. Press the button Mode to select the automatic stimulation programs and manual programs.
7. Adjust the power/intensity to a comfortable level and begin treatment.
8. After using this device, reduce the power intensity to level 1, and press OFF/▲ to turn off the device.



For the best performance of AC126 Zeus Palm Powerbox Electro Stimulation Massage System

- (1) Please choose the highest quality AAA batteries, and change the batteries when they are running low.
- (2) The electrode pads will age over time. Please replace the electrode pads when their adhesion becomes bad.
- (3) Recommended individual duration is 15 minutes for each treatment area, and frequency is 1-2 times per day.

Trouble shooting

If your device is not operating properly, please check it for the following problems or conditions:

MALFUNCTION	CAUSE	SOLUTION
Stimulation is weak or not existent	Are the electrode heads in close contact with the skin? Do the electrode heads touch each other and all electrodes are attached?	Remove, clean and place back the pads on the skin. If so, separate them. If not, attach all nodes to treatment area.

